

IMAGINE

The Strategic Planning Newsletter
of The Episcopal Church of St. Paul



The Episcopal Church of St. Paul

200 W. St. Paul Street, Brighton MI 48116
www.saintpaulsbrighton.org

A Look inside this Issue...



| | |
|---------------|--|
| Page 3 | What we did on our summer vacation Why a newsletter? |
| Page 4 | Guiding Principles and Values A Prayer for St. Paul's |
| Page 5 | Next Project Phase begins Meet Christine |
| Page 6 | Who will bring our dreams to life? |
| Page 7 | Looking down from above A look ahead |
| Page 8 | Strategic Planning Team |

A NOTE OF THANKS



Judy McKenzie presenting the Strategic Planning Team during our Annual Parish Meeting in January 2011

A very special thanks to Judy McKenzie. Over the last two years Judy, as Chair of Strategic Planning, has guided us through the process of Strategic Planning and has been instrumental in getting us to this point.

As John & Judy prepare for a new journey in Washington State the Vestry, Strategic Planning Team and all of us here at St. Paul's express our love, appreciation and gratitude for all their hard work, time and effort in helping us to more fully realize God's vision.

We wish them well and pray for God's continued blessing as they embark on a new journey.

***Gerry Knapp will take on the responsibility of Chairing the Strategic Planning Committee going forward.*

SAVE THE DATE!

December 18, 2011

ONE *Worship Service @ 9:30am followed by
a Strategic Planning Update and Parish Feedback.*

What we did on our Summer Vacation...



The Strategic Planning Committee (SPC) met with the Vestry on June 15, 2011 to fine tune the *Architectural Vision Statement*, which is guiding the strategic planning process to determine the future location of St. Paul's.

Christine Reinhardt, our liturgical design consultant, included this important document with the Request for Proposal (RFP) she sent to 10 architectural firms.

While we waited for the proposals to come in, we visited three churches in the Toledo area: Community of Christ Lutheran, Corpus Cristi Roman Catholic & Trinity Episcopal.

The SPC met on 21 July and reviewed the eight proposals we received. Four firms were selected for interviews and invited to a walk-through of our existing space. A "Walk-through" helps the architect better understand the site and the client's vision.

Then, on two nights in August, the Vestry joined the SPC for the interviews, two each night. Following the last interview, there was a lively discussion of the strengths and weaknesses of each firm. The result? The Collaborative Inc. from Toledo was unanimously selected.

Why a Newsletter?

Well, we know that there is a lot of information coming at you from a number of different areas and we want to make sure you have the most current information about our Strategic Planning progress.

Where are we now? What is the next step? How do I let my voice be heard?

These are some of the questions we hope to answer in the ongoing "Imagine" newsletter. Our hope is to have as much of the planning information available in every medium possible. Hope you enjoy catching up on where we are in planning.

YOUR...

Guiding Principles and Values

Remember January? Drawn from the meetings, discussions and reflections from our Annual Parish meeting in January and subsequent meetings, the Strategic Planning Committee is guided by the values and principles to reflect the needs of the St. Paul's community.

Looking not just at space needs but who we are as community and what we seek to become, all of our work is guided by the following values.

Joyfully speak to and embrace a diverse and bigger community

- Beacon on the hill heritage
- Dignified accessibility for all
- Complete inside and outside experience

Be good environmental stewards

- Re-new, Re-use and Re-purpose first
- Maximize space utilization flexibility
- Use sustainable design principles

Be economically viable

- Pragmatic stretch
- Consider the initial cost of renewal
- Mindful of long-term operating costs and debt

Integration of community

- Engaging downtown
- Embracing community

Be an effective Witness

- Choice of materials
- Sustainability is a priority

Center for spirituality and learning

- Potential for small concerts
- Classes and community activities

Timeliness design

- Welcoming space and site
- Gardens for meditation
- Color
- Energetic and vibrant

We know this is not an exhaustive list but it captures the core of who we are as the people of St. Paul.

A PRAYER FOR ST. PAUL'S

O God, our loving Creator and Giver of all good gifts, bless our parish and those who lead it, strengthen our faith, and grant us, as we plan for our future, a bright spirit with which to dream dreams, fresh words with which to proclaim your Christ, bold energy with which to build a community of Faith. Be with us as we seek to live more fully into your calling, but most of all give us loving hearts with which to reflect the love of your Son Jesus the Christ, in whose name we pray. Amen.



MEET CHRISTINE



Christine Reinhard has been a Liturgical Design Consultant over 25 years. She works with the symbol ritual faiths; Episcopal, Lutheran, Anglican, and Roman Catholic as they go through liturgical renewal and rethinking their places of worship for their renewed/revised liturgies.

She lives in Naples, FL with her retired obstetrician husband, but keeps an apartment in Fenton, MI so she can see her granddaughters on a regular basis, which means she is never from Michigan for very long.

Christine will be with the project until dedication of the "new church", guiding the process as well as acting as design consultant. She works in collaboration with the architect at all times. Christine is also a fiber artist and greatly enjoys designing environments and environmental hangings for the churches she works with in addition to designing the altar furnishings. She loves her work and is energized by it.

Next Project Phase Begins

The Strategic Planning Committee and Christine Reinhard met with architects Paul Hollenbeck and Jim Sarks for the first time on Sept. 29. The group first discussed the program needs of the project in order to establish the size of the proposed building.

They agreed the optimal size of 16,912 square feet and a reduced plan would be 14,898 sq. ft. St. Paul's currently has about 10,400 sq. ft. The plan includes worship area (250-300 people) with space for choir, musicians, and possible organ; gathering space for about 100, three class rooms, Youth Room and Choir Room.

Next they drew up a statement of guiding principles and values.

The meeting concluded with a discussion of our preferred options: Preserve and repurpose the original St. Paul's Church as a possible entry and gathering space, while also building out to meet optimal space needs, including having barrier free access from the parking area and main entry.



Who will bring our dreams to life?



t h e **COLLABORATIVE** *i n c*

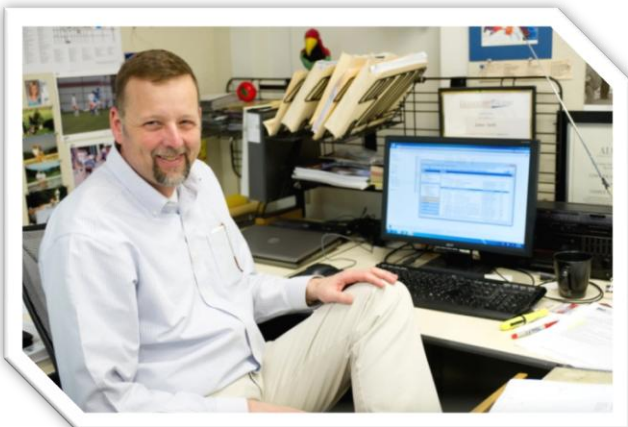
The Collaborative Inc is a 42-person firm of Architects, Landscape Architects, Planners and Interior Designers. Founded in Toledo, Ohio in 1973. The firm celebrated 38 years in 2011.

Today, the firm serves as design consultants on projects throughout the United States. It is a private corporation owned by five equal partners, and is managed on a day-to-day basis through six employee-run committees that focus on the areas of design, technology, professional development, process improvement, sustainability, and fun. Their services range from feasibility studies, to programming; from design to construction observation.

In 2002, The Collaborative was awarded The Gold Medal Firm Award, the highest honor bestowed by the Ohio Chapter of the American Institute of Architects, in recognition of their unique management style, quality design, and service to their profession and community.

Paul Hollenbeck will serve as facilitator and design leader, working with St. Paul's to explore options and develop a plan for the future. A Partner of The Collaborative Inc since 1984, he has over 40 years of planning and architectural experience with a strong emphasis in churches.

Paul has been a leader in the development of master plans, space planning and facility design for more than 50 parishes throughout Ohio and Michigan.

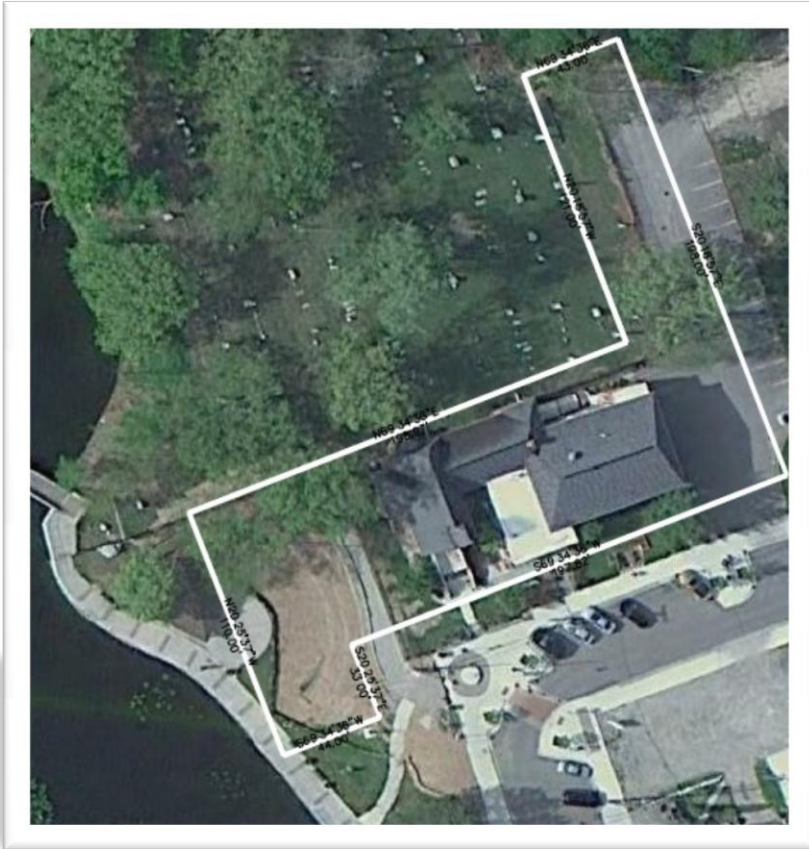


Jim Sarkis is the Project Manager. He will be hands-on with the project from kick-off meeting through construction administration. Jim joined the Collaborative Inc in 2004. He has over 27 years experience in building design. As a Project Manager for our project, Jim's responsibilities will include maintaining regular communication with the owner through the design and construction process, preparing design and construction documents, and coordinating the work of the consultant team.



Looking down from above...

Ever wondered how a bird saw the world? Well here is a bird's eye view of the St. Paul's property. Yes, we do own a lot more space than you thought.



Aerial photo showing St. Paul's property boundaries, created by Jeff Smith.

Our hope is that during our dreaming and visioning we will engage not just the members of St. Paul's, but the officials at the City of Brighton and the wider Brighton community.

We see St. Paul's as a place where community is fostered and welcomed and integrating our surroundings into our renewed space is extremely important.

A Look Ahead

September –October 2011

Explore four design options:

- * Expand existing building
 - * Replace existing building on site
 - * New site
 - * Renovate a building in the area
- Meet with Brighton city officials
 - Refine building program
 - Select 2 options for more detailed development



November 2011- January 2012

- Fine-tune the program
- Refine the 2 options
- End of January – 2 concepts to 1
- Present recommendation for discussion at Parish Annual Meeting

February – March 2012

- Site plan, floor plan, 3D views developed
- Cost estimate
- Final design approval

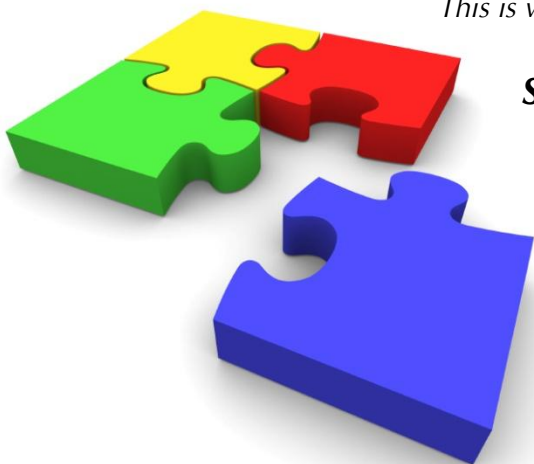
April June 2012

- Schematic design completed
- Construction drawings created

PUTTING THE PIECES TOGETHER...

OUR MISSION STATEMENT:

This is why we are here, why we exist



St. Paul's is a joyful and accepting community, actively inviting all seekers to know and experience God in Christ.

CORE VALUES:

This is what makes us who we are as St. Paul's

JOYFUL – We are a hopeful and optimistic community, celebrating Christ's presence through traditional and contemporary worship services, ritual, music and love for one another.

ACCEPTING – We are enriched through intentional efforts to be a welcoming community. We welcome everyone, and we mean everyone, with warmth and respect and offer all the opportunity to fully participate in the life of the Church.

COMMUNITY – We are a caring, growing, supportive, intergenerational community of faith that is continually being spiritually renewed by the active and meaningful engagement of children, youth, young adults and seniors and their friends and families.

ACTIVELY INVITING – We are proactive in reaching out to others to share our faith journey at St. Paul's and invite them to participate with us in worship services and programs.

SEEKERS – We are a safe refuge for all spiritual seekers to experience God in a variety of ways. We encourage diversity of thought, questions and challenging conversations about God and Christ. All people and their ideas are embraced in a spirit of mutual love and respect. Our progressive educational programs and ministries will inspire, inform and support seekers on their way towards what God is calling them to be.

EXPERIENCE GOD IN CHRIST – We experience God in Christ through our interactions with one another, through community and service to others. People who are in need and who are struggling experience God's love in active, tangible ways through outreach, G-3 Gardens and social justice ministries.

MEMBERS OF THE STRATEGIC PLANNING COMMITTEE

Vestry Members
and
Gerry Knapp, Chair
Dave Brown
Mary Bensmiller
Dave Brown
Sherry Hupp
Gerry Knapp
Greg Seaman
Jeff Smith
Dave Zorn

The Rev. Deon Johnson
Rector

Christine Reinhard
Liturgical Design Consultant

STRATEGIC PLANNING TASK FORCES

Music:

Jennifer Muller

Classrooms / Program Spaces
Jeff Smith

Office and Work Space
Laura Zizka-Wright

Youth & Children
Mike Batten

Kitchen & Facilities
John Nielsen
Mary Bensmiller